

TRAP PRIMERS

PRESSURE-DROP TRAP PRIMERS

- No internal mechanical parts
- Multiple Connection types
- Lead-Free
- Operates at pressures from 20-80 psi, with a minimum drop of 3 psi.



FIGURE NO. 2694
PRESSURE DROP TRAP PRIMER

ELECTRONIC TRAP PRIMERS

- Prime 1 to 36 traps.
- Factory pre-set, adjustable timer is programmed to provide a water injection to the trap every 24 hours
- Singular, surface-mounted, and flush-mounted models available.
- Push-in connection available on surface-mounted and flush-mounted models.
- Tested to ASSE 1044, conforms to UL & CSA Standards.

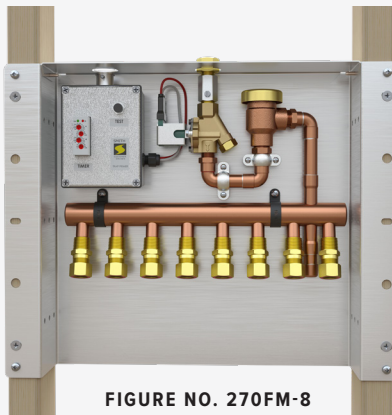


FIGURE NO. 270FM-8

DISTRIBUTION UNITS

- Distributes water evenly from one trap primer to up to four traps
- Two types: cloverleaf-style and branch-style
- A variety of outlet and connection types are available

CLOVERLEAF STYLE



FIGURE NO. 2694DA-ABS-625
TRAP PRIMING DISTRIBUTION UNIT

BRANCH STYLE



FIGURE NO. 2683-3
(4) 1/2" NPT THREAD

TRAP PRIMER ADAPTERS

- Provides a trap primer connection when the floor drain and P-trap are not tapped
- Includes a 1/2" or 5/8" brass compression fitting as selected
- Available in PVC or ABS
- Available in 2", 3" or 4" sizes



276 SERIES
ABS TRAP PRIMING ADAPTERS

276 SERIES
PVC TRAP PRIMING ADAPTERS

AIR GAP FITTINGS

- Protects against backflow into the potable water system
- Standard finish is brass
- Optional finishes are chrome-plated brass and nickel-plated brass



FIGURE NO. 280
1/2"-14NPT T
THREADED OUTLET ONLY

FIGURE NO. 281-S
1 1/2"-14NPT
SWEAT OUTLET ONLY

FIGURE NO. 281-T
1 1/2"-14NPT T
THREADED OUTLET ONLY

DIELECTRIC FITTINGS

- Interrupt continuity of electrical current
- Provide protection for the plumbing system
- Available in three models for flexible installations



FIGURE NO. 950-TXT
DIELECTRIC FITTING WITH
THREAD BY THREAD

FIGURE NO. 950-GXT
DIELECTRIC FITTING WITH
THREAD BY GROOVE

FIGURE NO. 950-GXG
DIELECTRIC FITTING WITH
GROOVE BY GROOVE

ACCESS DOORS

- Provides easy access to hidden components in the wall
- Allows products such as trap primers and water hammer arresters to be serviced

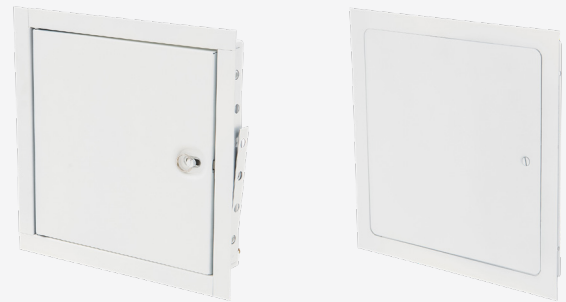


FIGURE NO. 474, 474-SS
FIRE-RATED WALL ACCESS DOORS

FIGURE NO. 470, 472
DRYWALL ACCESS DOORS

WATER HAMMER ARRESTERS

- Multiple models available for commercial, institutional and residential applications
- Nickel-plated model for special applications such as marine, chemical or petroleum environments



FIGURE NO. 511



FIGURE NO. 520-T-A



FIGURE NO. 520-SC-B



FIGURE NO. 520-SC-C



FIGURE NO. 520-SC-D