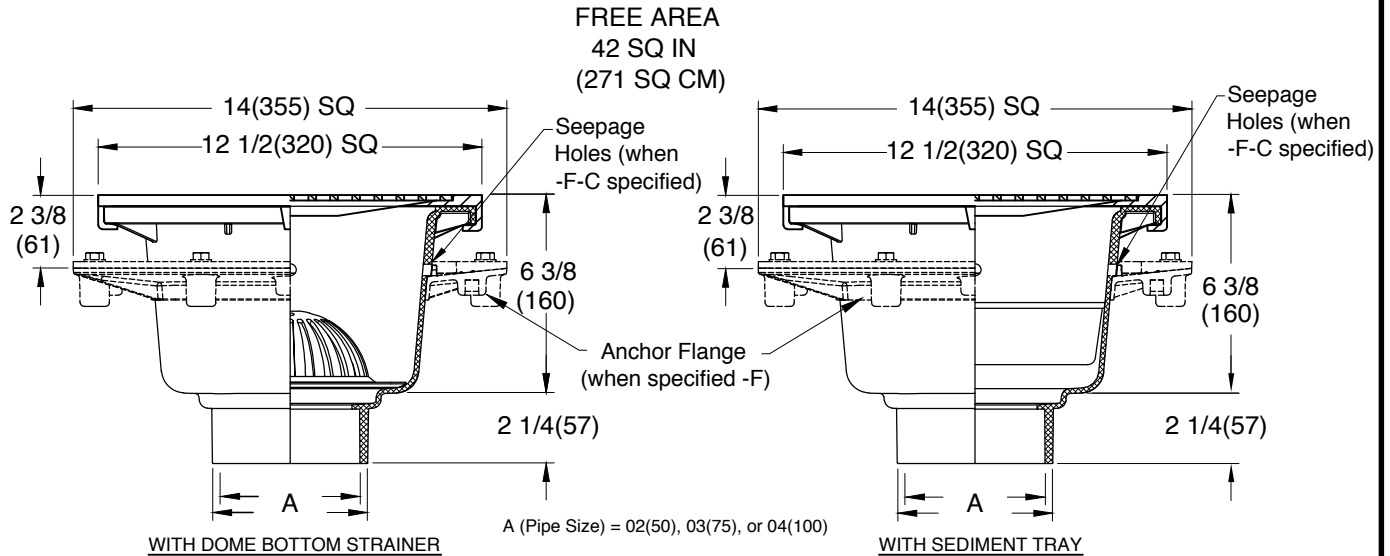


PVCeptor™ PVC SANI-CEPTOR FLOOR & INDIRECT WASTE DRAINS

SQUARE NICKEL BRONZE TOP

12 1/2"(320) SQ TOP - MEDIUM DEEP RECEPTORS

FUNCTION: Used in kitchens, hospitals, food markets, restaurants, schools and all types of food handling areas where the ultimate in sanitation is desirable and a medium capacity receptor is required. The white color provides an aesthetic and hygienic appearance.



- | | |
|--|--|
| <input type="checkbox"/> Fig. 3142H02x03 HUB x SLIP OUTLET | <input type="checkbox"/> Fig. 3143H02x03 HUB x SLIP OUTLET |
| <input type="checkbox"/> Fig. 3142H03x04 HUB x SLIP OUTLET | <input type="checkbox"/> Fig. 3143H03x04 HUB x SLIP OUTLET |
| <input type="checkbox"/> Fig. 3142H04 HUB OUTLET | <input type="checkbox"/> Fig. 3143H04 HUB OUTLET |

NOTE: Hub x Slip outlets fit over or inside of connecting pipe. Ex: H02x03 outlet fits over 2"(50) pipe or inside of 3"(75) pipe.

REGULARLY FURNISHED: PVC Receptor with Nickel Bronze Rim and Secured Grate and PVC Dome Bottom Strainer or PVC Sediment Tray as Indicated by Figure Number.

VARIATIONS:

- Anchor Flange -F
- Flashing Clamp -C



OPTIONAL GRATES:

SUFFIX NUMBER	DESCRIPTION
<input type="checkbox"/> -10	Less NB Rim and Grate
<input type="checkbox"/> -11	Less Grate with NB Rim
<input type="checkbox"/> -12	With NB Rim and 1/2 Grate
<input type="checkbox"/> -13	With NB Rim and 3/4 Grate
<input type="checkbox"/> -19	With NB Rim and Hinged Grate
<input type="checkbox"/> -21	With NB Rim and Grate w/ 4(100) DIA NB Funnel
<input type="checkbox"/> -22	With NB Rim and Grate w/ 6(150) DIA NB Funnel

NOTE: Minimum Temperature of -13°F/-25°C to a Maximum Temperature of 200°F/93°C. There is no distortion from water temperatures up to 200°F/93°C when draining through the drain.

Hot water or any other liquids exceeding 200°F/93°C should not be left standing in the receptor for extended periods.

SUFFIX NUMBER	DESCRIPTION
<input type="checkbox"/> -25	With NB Rim and Grate w/ 8 1/4(210) x 3 1/4(83) x 4 1/2(115) High Oval NB Funnel
<input type="checkbox"/> -26	With NB Rim and Grate w/ 6(150) x 2 1/2(64) x 1(25) High Oval NB Funnel
<input type="checkbox"/> -41	With NB Rim and Solid Cover
<input type="checkbox"/> -42	With NB Rim and 1/2 Solid Cover
<input type="checkbox"/> -43	With NB Rim and 3/4 Solid Cover
<input type="checkbox"/> -44	With NB Rim and Solid Cover w/ 2 1/2 (64) DIA Center Hole

Patent Pending

DRAWING NUMBER
S3142-3143

SIZE
A

SCALE:
NONE

DATE:
04-25-14

APPROVED BY:
CR

CHECKED BY:
CL

DRAWN BY:
CL

3142-3143 Series

FIGURE NUMBER

REV.	DATE	DESCRIPTION	BY	CKD. BY
B	10-10-16	Added IAPMO Listing, Patent Pending	TBW	CL
A	9-24-15	Rev. Reg. Furn., Title	TBW	SJM

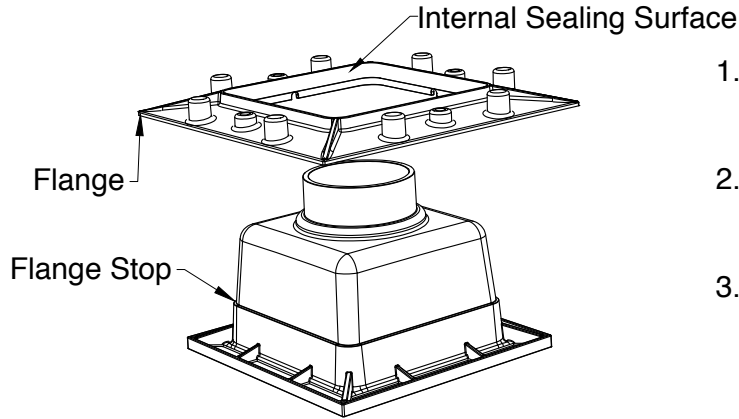
WEIGHT POUNDS	VOLUME CUBIC FEET

FIGURE NUMBER
3142-3143
Series

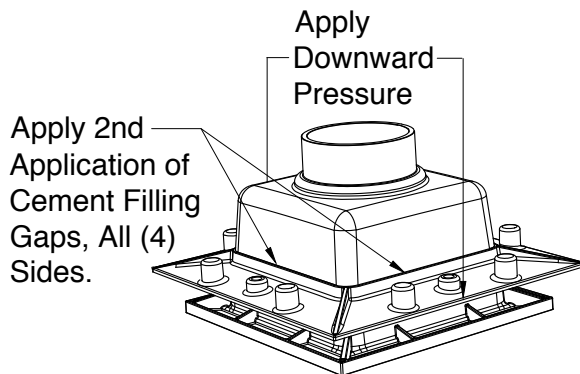
PVCeptor™ PVC SANI-CEPTOR FLANGE INSTALLATION

DRAWING NUMBER **s3142-3143BS**
 SIZE **A**
 SCALE: **NONE**
 DATE: **10-12-2016**
 APPROVED BY: **CL**
 CHECKED BY: **CL**
 DRAWN BY: **TBW**
3142-3143BS
 DIMENSIONS ARE SUBJECT TO MANUFACTURERS TOLERANCE AND CHANGE WITHOUT NOTICE

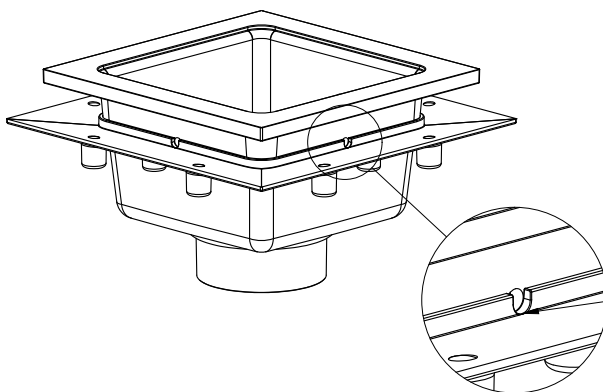
WE CAN ASSUME NO RESPONSIBILITY FOR USE OF SUPERSEDED OR VOID DATA



1. Clean the body at the flange stop and the internal sealing surfaces of the flange thoroughly with PVC primer and allow to dry.
2. Apply a liberal coat of PVC cement to the flange stop of body and internal sealing surfaces of flange.
3. Assemble parts QUICKLY ensuring the flange fully engages the flange stop on all (4) sides of the body. Cement must be fluid. If cemented surfaces have dried, recoat both parts with PVC cement.



4. Apply downward pressure on the flange for (2) minutes to prevent flange from pushing up.
5. Apply a second application of PVC cement to the bottom side of flange and body interface, filling any gap between the body and flange.
6. Allow to dry thoroughly, a minimum of (2) hours before handling and installing the drain.



7. When seepage openings are required, drill a 3/8" hole on all (4) sides on top of flange as indicated.

REV.	DATE	DESCRIPTION	BY	CKD. BY

WEIGHT POUNDS	VOLUME CUBIC FEET

FIGURE NUMBER
3142-3143BS