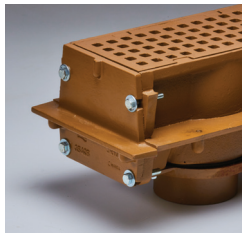




# WHY SETTLE?

Jay R. Smith Mfg. Co. offers a variety of Trench Drain options for all applications.



Cast Iron  
2700 Series



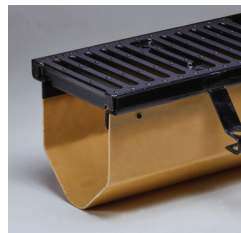
Polypropylene  
9930 Series



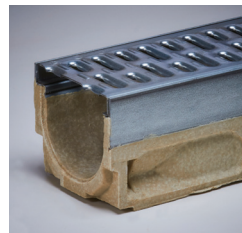
Stainless Steel  
9660 Series



Stainless Steel  
Shower  
9666 Series



Fiberglass  
9812 Series



Polymer Concrete  
9895 Series



**JAY R. SMITH MFG. CO.**  
MEMBER OF MORRIS GROUP INTERNATIONAL

P.O. Box 3237 • Montgomery, AL 36109  
TEL: 334.277.8520

[www.jrsmith.com](http://www.jrsmith.com)



*Celebrating*  
**90**  
YEARS  
OF BEING  
CUSTOMER-DRIVEN